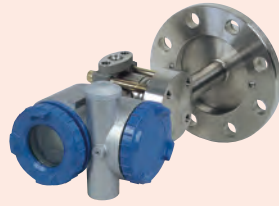


RELATED INSTRUMENTS



Level Transmitter

FCX-AIII series



Ex d
Ex i



Ex d
Ex i

| Model | | FKE | FKY |
|--------------------|------|---|---|
| Measuring object | | Liquid | Liquid |
| Function | | ·Local indication ·4 to 20 mA (2-wire) | ·Local indication ·4 to 20 mA (2-wire) |
| Measuring range | Min. | 0.32 kPa | 3 kPa |
| | Max. | 500 kPa | 500 kPa |
| Process connection | | Flange: 80 mm, 100 mm (3", 4") | Flange: 40 mm, 50 mm (1-1/2", 2") |
| Standard material | | SUS316 | SUS316 |

Differential Pressure / Pressure Transmitter

FCX-A III series



Ex d
Ex i



Ex d
Ex i



Ex d
Ex i

| Model | | FKC | FKG | FKX |
|--------------------|------|---|---|---|
| Measuring object | | Liquid, Gas, Steam | Liquid, Gas, Steam | Liquid, Gas, Steam |
| Function | | ·Local indication ·4 to 20 mA (2-wire) | ·Local indication ·4 to 20 mA (2-wire) | ·Local indication ·4 to 20 mA (2-wire) |
| Measuring range | Min. | 0.1 kPa | 1.3 kPa | 3 kPa |
| | Max. | 3000 kPa | 50000 kPa | 500 kPa |
| Process connection | | Rc 1/4 | Rc 1/4 | Flange: 40 mm, 50 mm (1-1/2", 2") |
| Standard material | | SUS316 | SUS316 | SUS316 |

DT series



| Model | | DT |
|--------------------|------|---|
| Measuring object | | Liquid, Gas |
| Function | | ·Local indication ·Current output ·Pulse output |
| Measuring range | Min. | 1 kPa |
| | Max. | 50 kPa |
| Process connection | | Rc 1/4 |
| Standard material | | SUS316 |

Receiver

IR/RR series



| Model | IR4600 | IR6000 | IR1600 | RR930N | RR940N |
|-----------------------------|--|--|---|--------------------------|--|
| Power supply | ·85 to 264 V AC ·12 to 24 V DC | ·85 to 264 V AC ·24 V DC | 24 V DC | 10 to 27 V DC | 10 to 27 V DC |
| Function / Indication | ·Flow rate ·Totalizer ·Extraction of square root | ·Flow rate ·Totalizer | ·Flow rate ·Totalizer | ·Flow rate ·Totalizer | ·Flow rate ·Totalizer |
| Input | ·Open collector pulse ·4 to 20 mA DC ·1 to 5 V DC ·0 to 5 V DC (optional) ·Voltage pulse | ·Open collector pulse ·4 to 20 mA DC ·1 to 5 V DC ·0 to 5 V DC (optional) ·Voltage pulse | ·Open collector pulse ·Voltage pulse | Open collector pulse | Open collector pulse |
| Output | ·4 to 20 mA DC ·Pulse ·Alarm | ·4 to 20 mA DC ·Pulse ·Alarm | ·Alarm ·4 to 20 mA DC (optional) | Re-output of pulse | Selectable from 4 to 20 mA DC or Voltage pulse |
| Power supply for the sensor | 24 V DC | 24 V DC | 12 V DC | 12 V DC | 12 V DC |